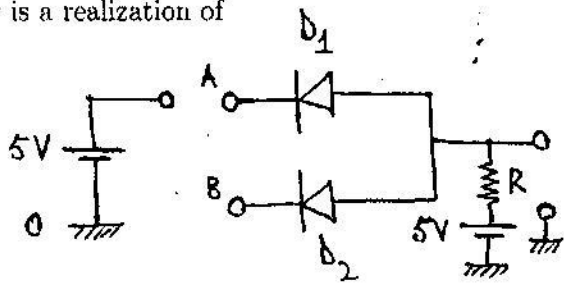


- 15. The zeroeth law of thermodynamics introduces the concept of
 - (A) pressure
 - (B) volume
 - (C) temperature
 - (D) density
- 16. A nonmagnetic medium with dielectric function ϵ is dispersive if
 - (A) ϵ is complex
 - (B) ϵ is a tensor
 - (C) ϵ has a spatial dependence
 - (D) ϵ has a frequency dependence
- 17. Given that CsCl crystal has a b.c.c. structure and the radii of Cs and Cl ions are r_1 and r_2 , respectively, the lattice constant of this structure is given by
 - (A) $(r_1 + r_2)/\sqrt{2}$
 - (B) $(r_1 + r_2)/\sqrt{3}$
 - (C) $2(r_1 + r_2)/\sqrt{3}$
 - (D) $(r_1 + 2r_2)/\sqrt{3}$

18. The circuit shown below is a realization of



- (A) AND gate
 - (B) OR gate
 - (C) XOR gate
 - (D) NAND gate
19. For a CE transistor to function as an amplifier it is necessary to keep
- (A) $B - E$ junction forward biased and $C - B$ junction forward biased
 - (B) $B - E$ junction reverse biased and $C - B$ junction forward biased
 - (C) $B - E$ junction reverse biased and $C - B$ junction reverse biased
 - (D) $B - E$ junction forward biased and $C - B$ junction reverse biased
- where E, B and C refer to emitter, base, and collector.
20. The width of an excited state (Γ) is related to its life time (τ) by
- (A) $\Gamma = \hbar/\tau$
 - (B) $\Gamma = \tau\hbar$
 - (C) $\Gamma = 1/\tau$
 - (D) $\Gamma = C/\tau$